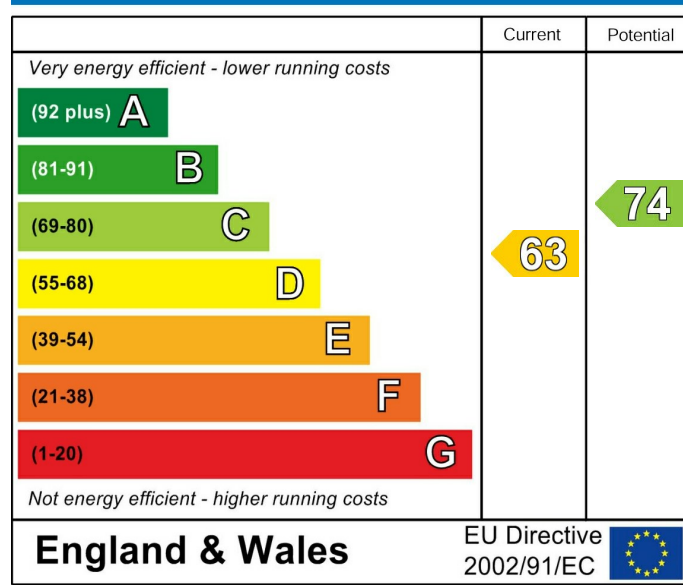
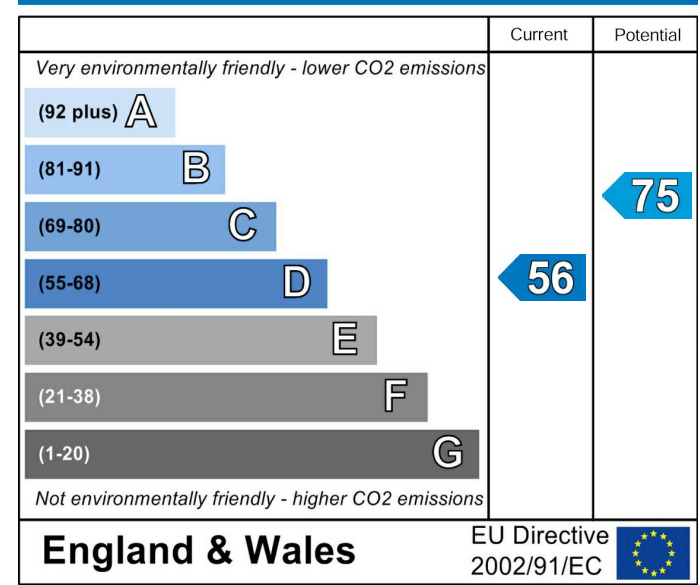




Energy Efficiency Rating



Environmental Impact (CO₂) Rating



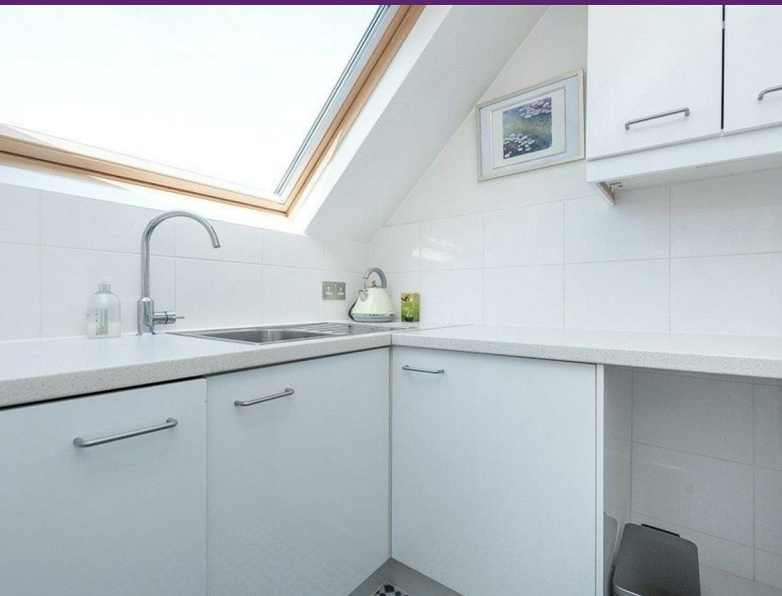
Grosvenor Gardens, Willesden Green, NW2 4QP

Asking Price £390,000

Subject to Contract

- Beautiful tree lined avenue
- Chain free
- Double glazed windows
- Split level

- A mere hop of the transport links & local shops
- Well maintained one double bedroom
- Lounge with dining area
- Loft storage



Grosvenor Gardens, NW2 4QP

Characterful, penthouse apartment located in sought after tree-lined avenue ... carved out of this unique end of terraced period house. On the second, (top floor) of four flats, with a lot of loft eave storage. In mere hopping distance of Willesden Green (Jubilee Line) tube & Sainsbury's supermarket.

Split level property offering over 450 sq ft comprising of a good-sized double bedroom, with a modern separate fitted kitchen and stylish reception room with dining area, as well as a contemporary style fitted bathroom. Double glazing throughout with a good natural light filtering through.

The property has been extremely well maintained, ready to move in straight away, suiting both a first-time buyer as well as a buy to let investor. Willesden Green has a variety of local shops, deli's, restaurants, cafes/bars, as well as the open space of Gladstone Park.

Chain free...

Tenure Leasehold

Price Asking Price £390,000 Subject to Contract

Viewing by appointment , through joint sole agents Warwick Estate Agents



Tel: +44 (0)2 8960 9988
Fax: +44 (0)2 8960 9989

Email: mail@warwickestateagency.co.uk
warwickestateagents.tv | warwickestateagents.co.uk

69 Chamberlayne Road, London NW10 3ND
Tel: +44 (0)20 8960 9988 Fax: +44 (0)20 8960 9989